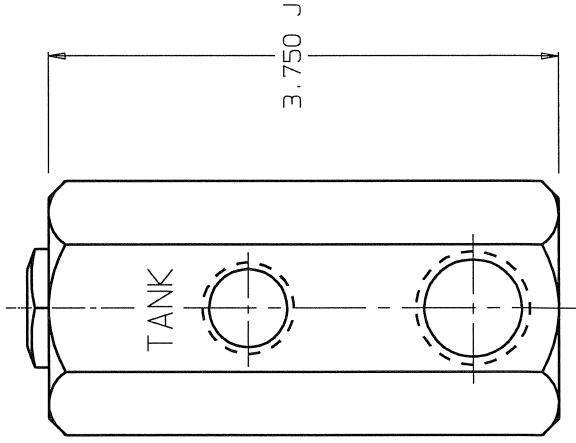
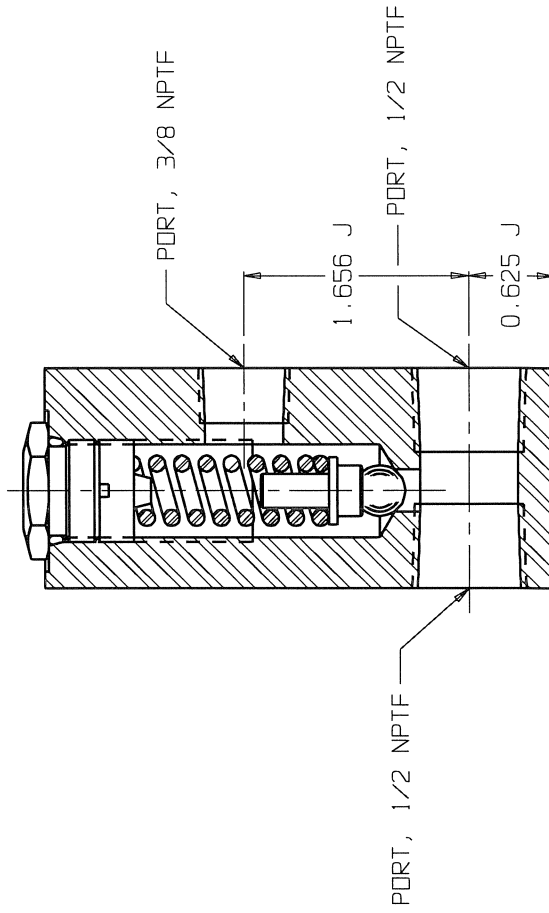


PRESSURE ADJUSTMENT FROM
700 TO 3,000 PSI DEPENDING
ON FLOW

FLOW CAPACITY: 20 GPM MAX.

PRESSURE SETTING: 2,000 ± 50 PSI
AT 10 GPM USING 164 SSU OIL AT
90 - 110° F

OUTSIDE SURFACE ZINC PLATED



DO NOT SCALE PRINT

UNLESS OTHERWISE SPECIFIED
tolerances as follows:

A +/- 0.00015	G +/- 0.010
B +/- 0.0003	H +/- 0.020
C +/- 0.0005	J +/- 0.030
D +/- 0.001	K +/- 0.060
E +/- 0.002	L +/- 0.125
F +/- 0.005	Angle +/- 2°

Material:

HT. Treat:

Finish:

Drawn by:

P. D.

Checked by:

Third Angle Projection.

No.

Revision

Date

Appr. By

ENERGY MFG. CO., INC.

Title: RELIEF VALVE - 1/2 NPTF

Scale:

1 : 1

0A004060

ALL DRAWINGS AND BLUEPRINTS SUPPLIED BY ENERGY MANUFACTURING CO. ARE SUBJECT TO PROTECTION UNDER THE UNITED STATES COPYRIGHT LAW, WHICH MAKING OTHER FORMS, PERMITS REPRODUCTION, DERIVATION OR DISTRIBUTION OF COPIES. THE DRAWINGS CONTAIN TRADE SECRETS OF ENERGY MANUFACTURING CO. AND ARE SUPPLIED TO THE VENDOR OR CUSTOMER ON A CONFIDENTIAL BASIS AND SHALL NOT BE DISCLOSED OR DISTRIBUTED TO OTHERS WITHOUT THE PRIOR EXPRESS WRITTEN PERMISSION OF ENERGY MANUFACTURING CO. IF YOU ARE AN EMPLOYEE OF ENERGY MANUFACTURING CO. WHEN THE NEED FOR SUCH MATERIALS IS ENDED, OR UPON THE EARLIER DEMAND FOR THE RETURN OF THE MATERIALS BY ENERGY MANUFACTURING CO.