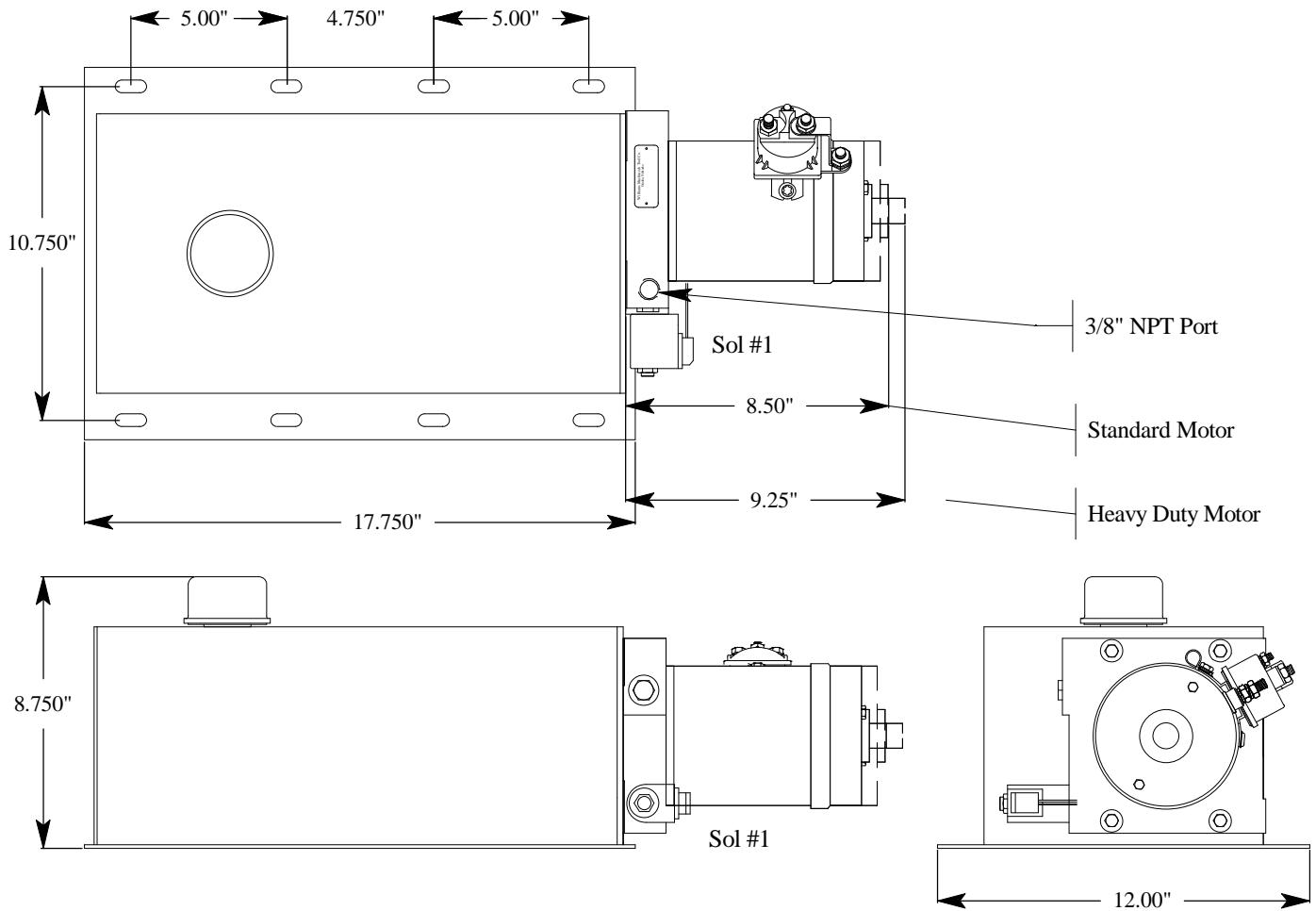
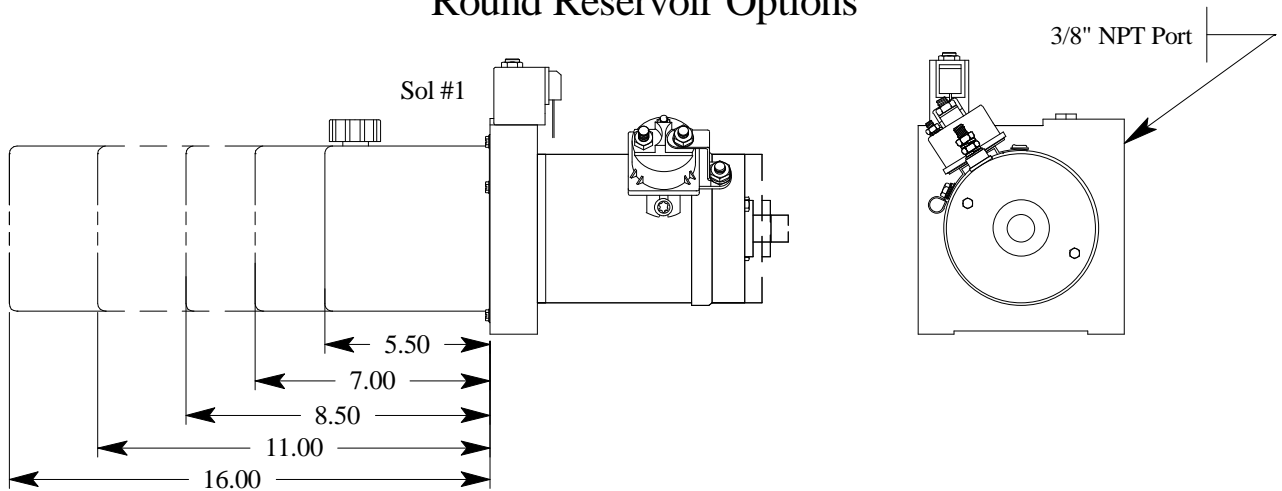


#17 Single Acting Solenoid Valves, 2-Way, NC Check Valves, 3/8" NPT Ports – DC Unit Layout

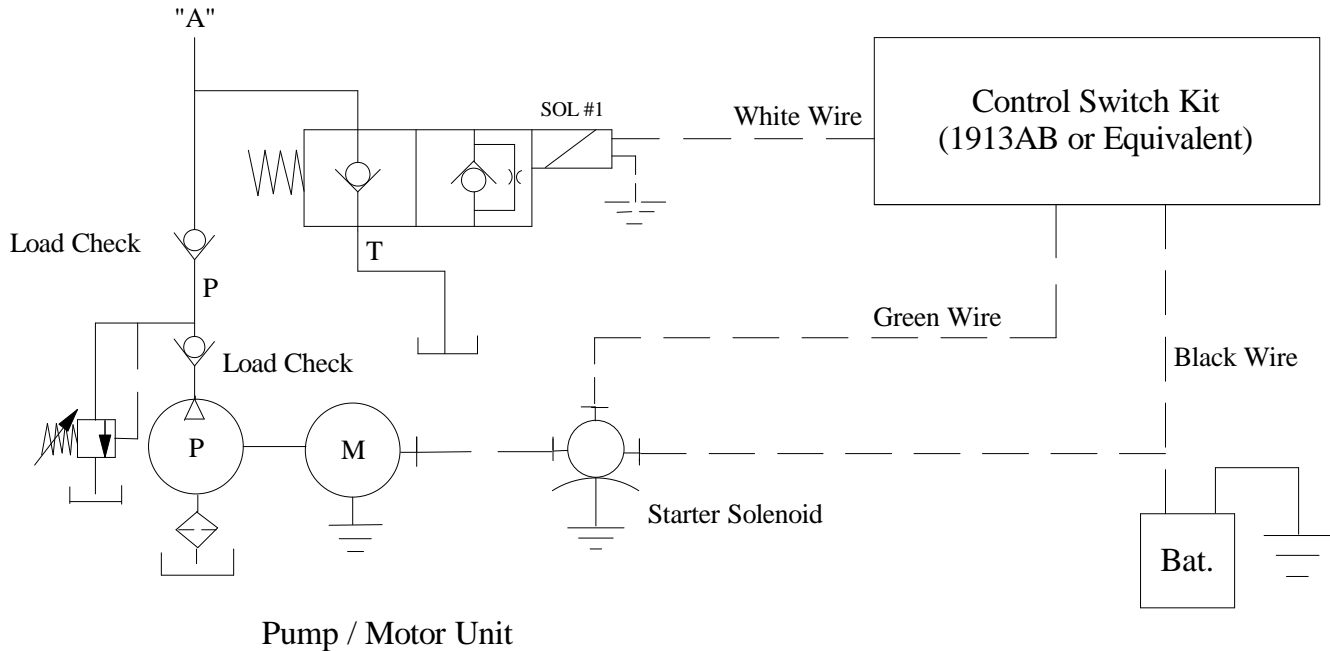


Round Reservoir Options



5.50" Long	.95 Quarts (55 Cubic Inches) Useable Reservoir Oil Capacity	11.00" Long	2.65 Quarts (153 Cubic Inches) Useable Reservoir Oil Capacity
7.00" Long	1.43 Quarts (82 Cubic Inches) Useable Reservoir Oil Capacity	16.00" Long	4.20 Quarts (243 Cubic Inches) Useable Reservoir Oil Capacity
8.50" Long	1.88 Quarts (108 Cubic Inches) Useable Reservoir Oil Capacity		

#17 Single Acting Solenoid Valves, 2-Way, NC Check Valves, 3/8" NPT Ports – Schematic



System Function

Energizing Power unit only, oil is directed to Port "A".

Energizing SOL #1 only, oil is directed from Port "A" back to tank ("T" port).

Valve Characteristics

1. Uses one 2-way, N/C P.O. poppet type cartridge valve, solenoid operated.
2. Manifold block machined for one 2-way, cartridge valve and with one 3/8" NPT port.

Application

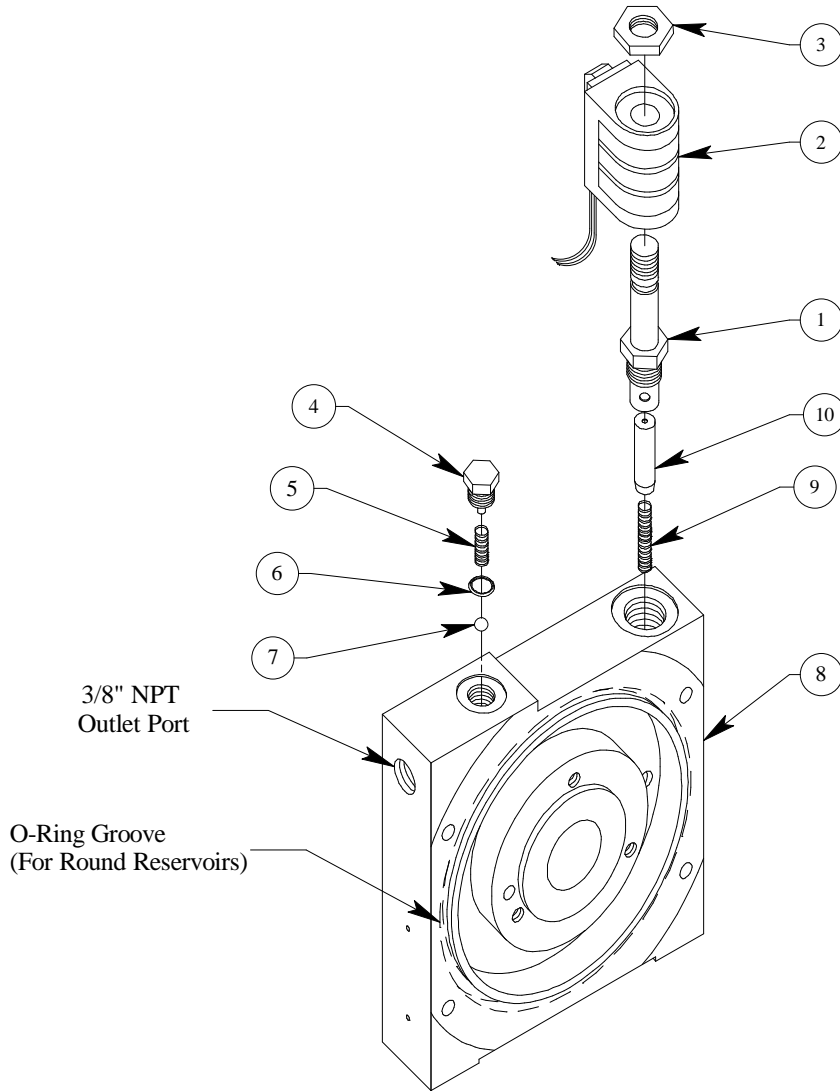
1. Power Up/ Gravity Down

Limitations

1. This valve may be used in lifting applications with the following precaution :
 - If valve is used in an application in which a cylinder is to be lowered with a load on it (over-riding load), it should be noted that the loaded cylinder may lower very rapidly (in as little as one (1) second with a heavy over-riding load on the cylinder).
2. This valve is not stackable.
3. It is recommended that in applications in which a cylinder is to be lowered with a load on it (over-riding load), the #11, #12, 15, or #16 valve is to be used so that complete "control" of cylinder is obtained at all times.
4. Horizontal Mounting.

#17 Single Acting Solenoid Valves, 2-Way, NC Check Valves, 3/8" NPT Ports – Assembly

2534



Drawing No.	Part No.	Quantity Req'd	Part Description
1	2703	1	Cartridge Only, 2-Way, 2-Position, N/C Check Valve
2	2705	1	12 Volt Coil
2B	2706	1	24 Volt Coil
2C	2707	1	110 Volt Coil
2D	2708	1	220 Volt Coil
3		1	Cartridge Valve Nut
4	1008	1	Port Stud W/Pin
5	2264	1	Spring, Long Exhaust
6	2540	1	O-Ring, Boss Seal -905
7	1015	1	Bearing, 5/16" Chrome Ball
8	-	1	Manifold, Machined (2519, 2551)
9	2500	1	Flow Control Spring (Optional)
10	2498	1	Flow Control, Pressure Compensated (Optional)