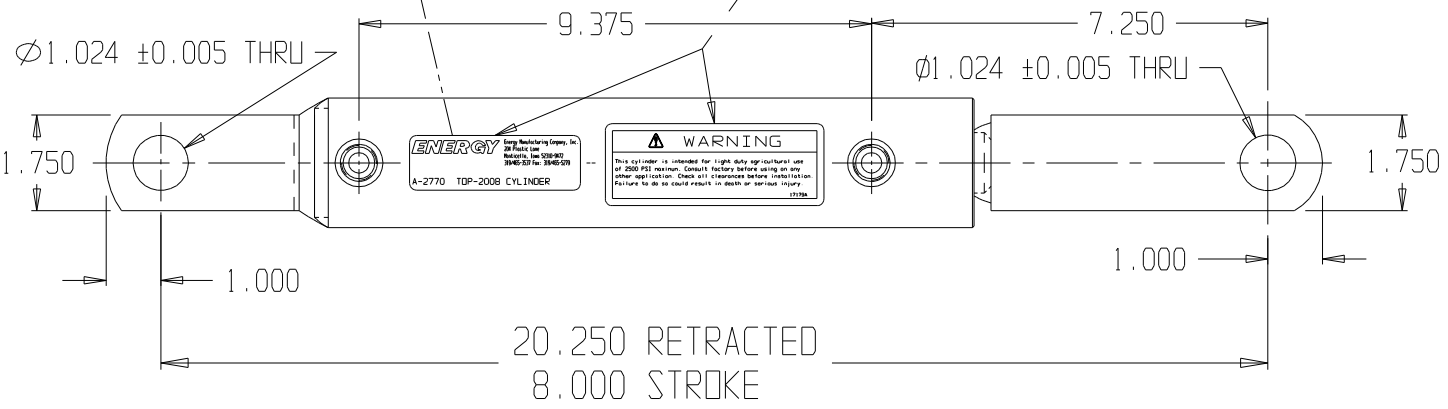


ENERGY Energy Manufacturing Company, Inc.
 204 Plastic Lane
 Monticello, Iowa 52310-9472
 319/465-3537 Fax: 319/465-5279

A-2770 TOP-2008 CYLINDER

AFTER CYLINDER IS PAINTED,
 AFFIX PRINTED LABEL AND DECAL,
 NOTE: MUST FACE AS SHOWN



BORE: 2.000 STROKE: 8.000 SEAL KIT: A-1665 PAINT: RED	ROD DIA.: 1.125 ROD FINISH: HARD CHROME-PLATED FURNISHED: (2) 35875X PIN (4) 35879X HITCHPIN CLIP
--	--

CAUTION: DUE TO CRITICAL BUCKLING CONSIDERATIONS
 THE MAXIMUM LOAD AT FULL EXTENSION MUST NOT EXCEED
 ~~~ LBS. (PRESSURE REF: ~~~ PSI) WITH NO SIDE LOAD.  
 IF SIDE LOAD IS PRESENT CONSULT FACTORY.

RATED PRESSURE WHEN BUCKLING IS NOT A FACTOR: 2,500 PSI

THIS DRAWING AND ALL INFORMATION CONTAINED  
 ON IT IS THE PROPERTY OF ENERGY MFG. CO.,  
 INC. AND IS LOANED CONFIDENTIALLY AND MUST  
 NOT BE USED OR DISCLOSED DIRECTLY OR  
 INDIRECTLY IN ANY WAY DETRIMENTAL TO OUR  
 INTERESTS.

|     |                                |          |          |
|-----|--------------------------------|----------|----------|
| 04  | ADD DECAL AND LABEL TO DRAWING | 03.25.08 | ECN3583  |
| 03  | CLEVIS PIN WAS A-1931 (QTY 2)  | 02.28.08 | ECN3563  |
| 02  | REDRAWN IN CAD                 | 04.01.04 | ECN384   |
| No. | Revision                       | Date     | Appr. By |

ENERGY MFG. CO., INC.

Title: CYLINDER, DOUBLE - ACTING  
 2" BORE X 8" STROKE

Scale: 0.25

A-2770 04

|                         |                   |
|-------------------------|-------------------|
| Third Angle Projection. | No.               |
| Material:               |                   |
| HT. Treat:              |                   |
| Finish:                 |                   |
| Drawn by:               | B. G. T. 10.14.68 |
| Checked by:             |                   |
| Approved by:            |                   |