

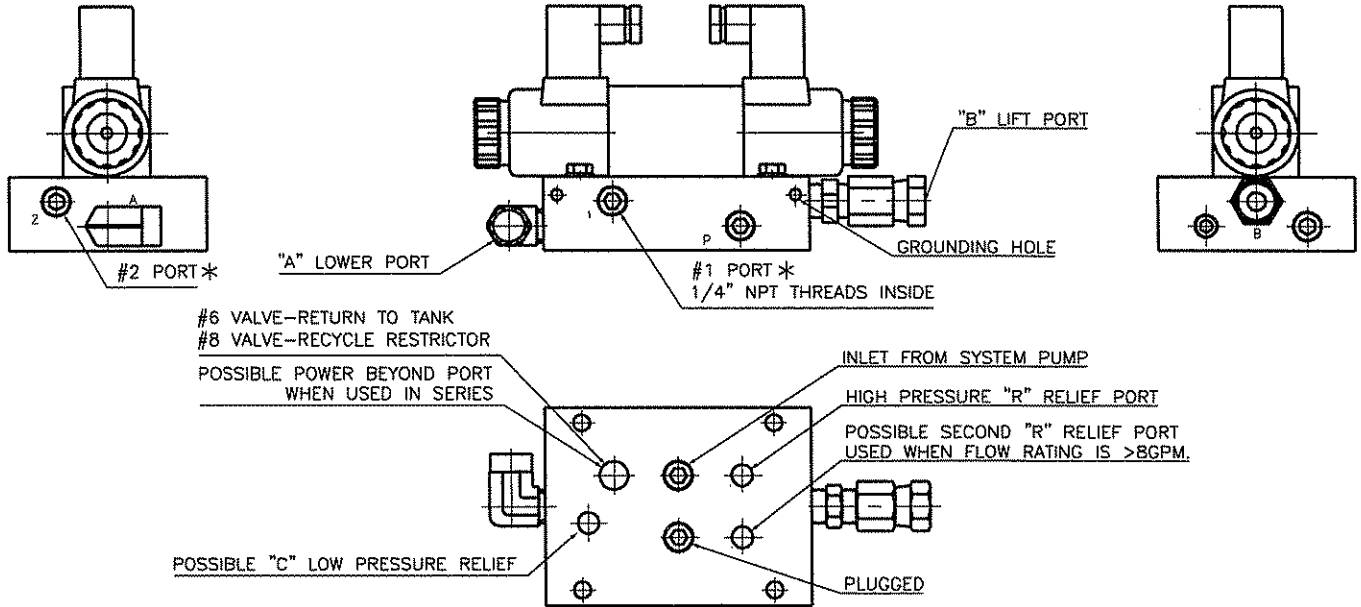
# WILLIAMS MACHINE & TOOL

VALVE CONFIGURATION FOR #6, 7 & 8 ELECTRIC D03 VALVES  
WHEN USED WITH WILLIAMS PUMP IN TANK SYSTEMS

## #6 OR #8 ELECTRIC VALVE

DOUBLE ACTING

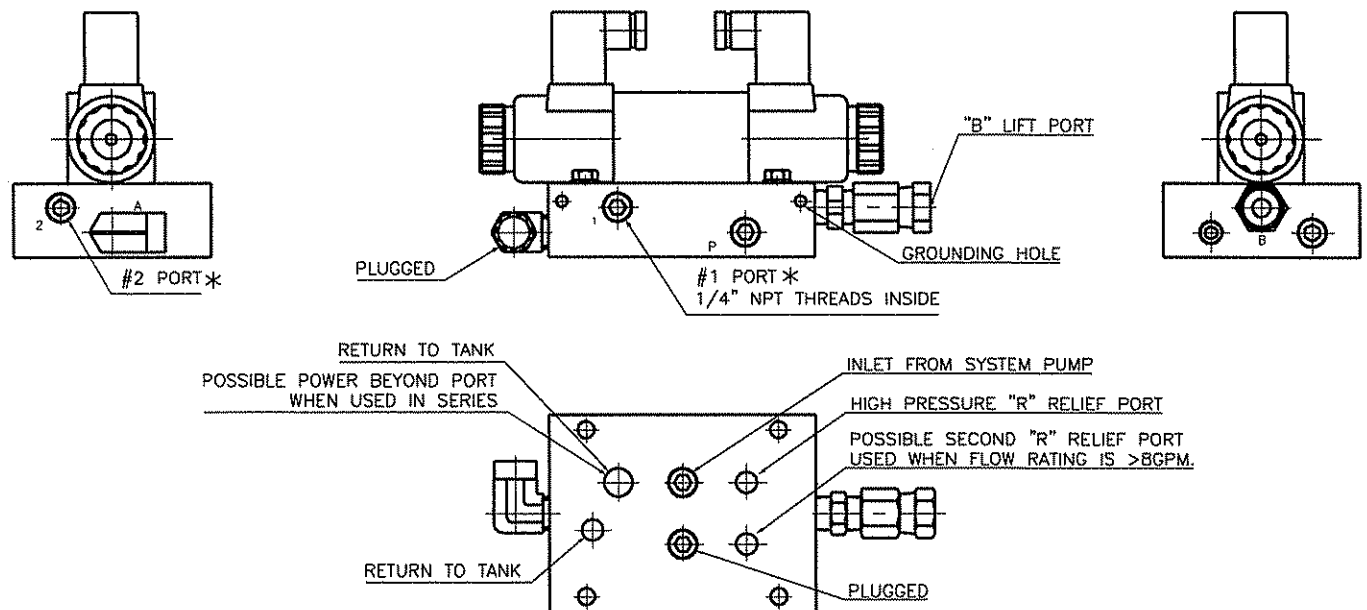
WHEN USED WITH PUMP IN TANK SYSTEMS



## #7 ELECTRIC VALVE

SINGLE ACTING

WHEN USED WITH PUMP IN TANK SYSTEMS



\* NOTE: AS WITH ALL WILLIAMS MACHINE AND TOOL VALVES, POWERING A SECONDARY VALVE IS POSSIBLE USING THE POWER BEYOND PORT ON THE BOTTOM OF THE VALVE. WITH THE ELECTRIC VALVES AN ALTERNATE POWER BEYOND PORT CAN BE ACCESSED ON THE SIDE OF THE SUB PLATE TO POWER ANY MISCELLANEOUS OPERATION. REMOVING THE 3/8" NPT PLUG FROM THE #1 PORT AND INSERTING A 1/4" NPT PLUG AT THE BASE OF THE #1 PORT, ALLOWS THE #2 PORT TO BE USED AS A POWER BEYOND PORT AND THE #1 PORT TO BE USED AS A RETURN.