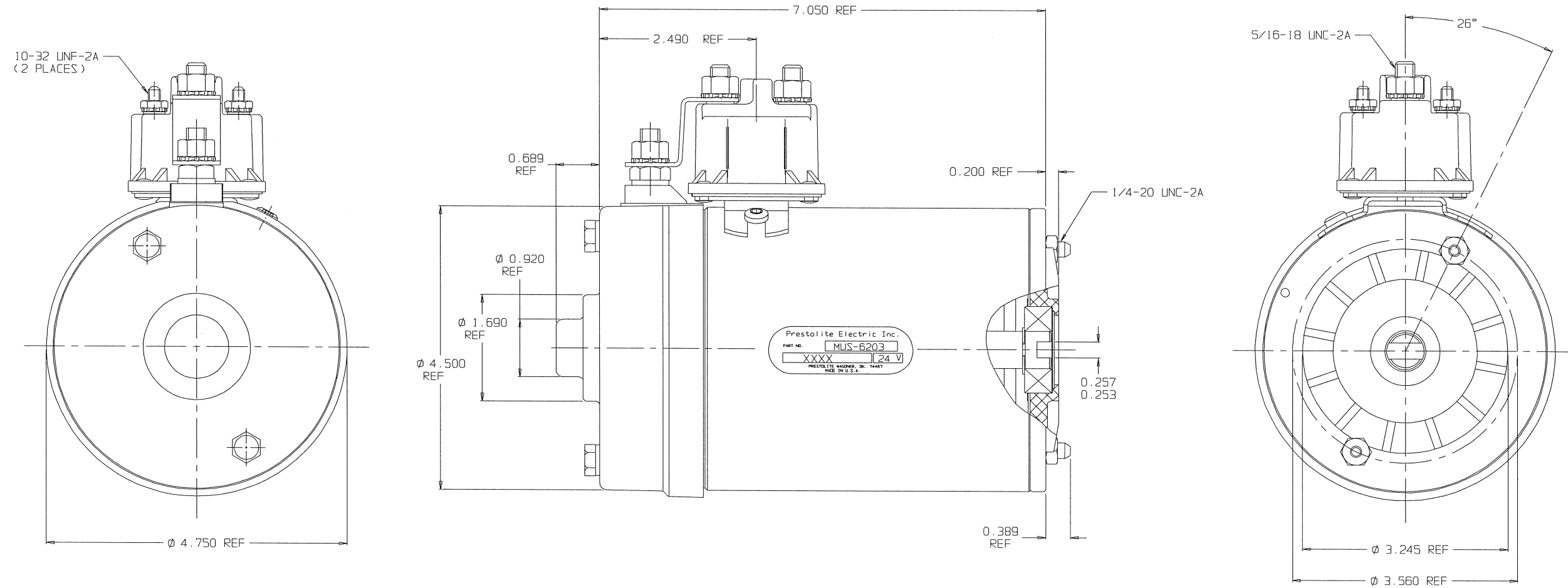


PURCHASED ITEM SPECIFICATION SHEET



PERFORMANCE					
GREEN					
V	T(LB-FT)	AMPS	RPM	HP	EFF
24	2	70	3720	1.42	62.9%
24	4	106	3012	2.29	67.3%
24	6	140	2606	2.98	66.1%
24	8	172	2318	3.53	63.8%
24	10	201	2098	3.99	61.8%
24	12	230	1932	4.41	59.7%
V	AMPS	T (LB-FT)	RPM	HP	EFF
23.3	75	2.60	3226	1.60	68%
22.8	100	4.05	2726	2.10	69%
22.3	125	5.59	2361	2.51	67%
21.9	150	7.20	2085	2.86	65%
21.5	175	8.87	1866	3.15	62%
21.2	200	10.58	1719	3.46	61%

PERFORMANCE					
SEATED					
V	T(LB-FT)	AMPS	RPM	HP	EFF
24	2	65	3651	1.39	66%
24	4	100	2951	2.25	70%
24	6	133	2559	2.92	68%
24	8	165	2284	3.48	66%
24	10	195	2075	3.95	63%
24	12	224	1924	4.40	61%
V	AMPS	T (LB-FT)	RPM	HP	EFF
23.3	75	2.66	3218	1.63	69%
22.8	100	4.12	2706	2.12	70%
22.3	125	5.64	2337	2.51	67%
21.9	150	7.23	2060	2.84	64%
21.5	175	8.88	1850	3.13	62%
21.2	200	10.52	1705	3.42	60%

Q38138D

ALL DRAWINGS AND BLUEPRINTS SUPPLIED BY ENERGY MANUFACTURING CO. ARE SUBJECT TO PROTECTION UNDER THE UNITED STATES COPYRIGHT LAW, WHICH AMONG OTHER THINGS, PROHIBITS REPRODUCTION, DERIVATION OR DISTRIBUTION OF COPIES. THE DRAWINGS CONTAIN TRADE SECRETS OF ENERGY MANUFACTURING CO. AND ARE SUPPLIED TO THE VENDOR OR CUSTOMER ON A CONFIDENTIAL BASIS AND SHALL NOT BE DISCLOSED OR DISTRIBUTED TO OTHERS WITHOUT THE PRIOR EXPRESS WRITTEN PERMISSION OF ENERGY MANUFACTURING CO. ALL DRAWINGS AND OTHER WRITTEN MATERIALS PROVIDED TO THE VENDOR OR CUSTOMER SHALL BE RETURNED TO ENERGY MANUFACTURING CO. WHEN THE NEED FOR SUCH MATERIALS IS ENDED, OR UPON THE EARLIER DEMAND FOR THE RETURN OF THE MATERIALS BY ENERGY MANUFACTURING CO.

DO NOT SCALE PRINT

UNLESS OTHERWISE SPECIFIED
 Letters after dimensions defines tolerances as follows:
 A +/- 0.0015 G +/- 0.010
 B +/- 0.0003 H +/- 0.020
 C +/- 0.0005 J +/- 0.030
 D +/- 0.001 K +/- 0.060
 E +/- 0.002 L +/- 0.125
 F +/- 0.005 Angle +/- 2"

Material:	01 REDRAWN IN CAD	10.07.04	ECN273E
Third Angle Projection.	No. Revision	Date	Appr. By
WILLIAMS MACHINE & TOOL			
Title: MOTOR, 24VDC INTERMITTENT DUTY			
Drawn by: G.C. 10.07.04	Checked by:	Approved by:	Scale: 1:1