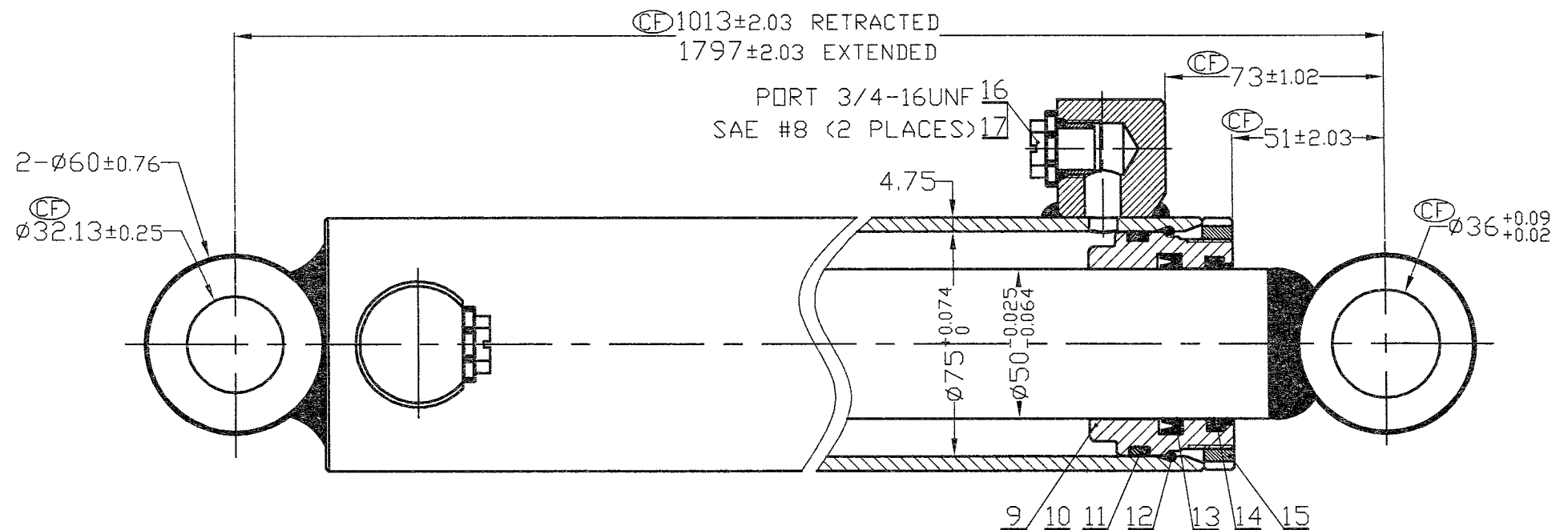
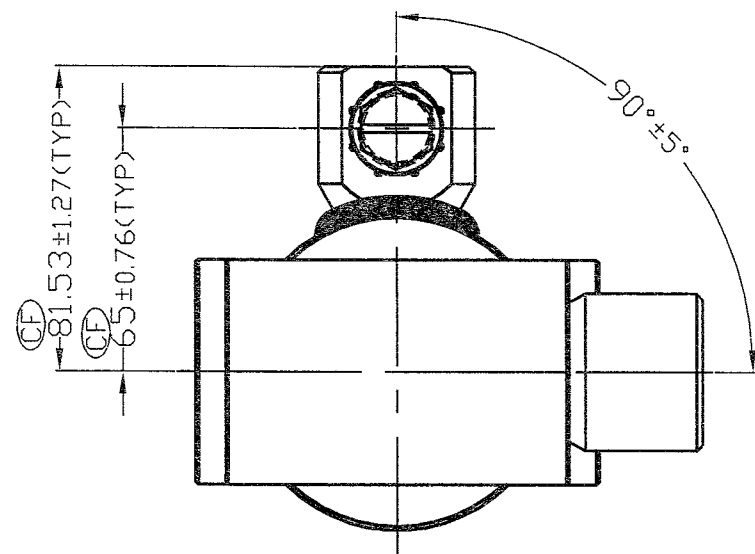
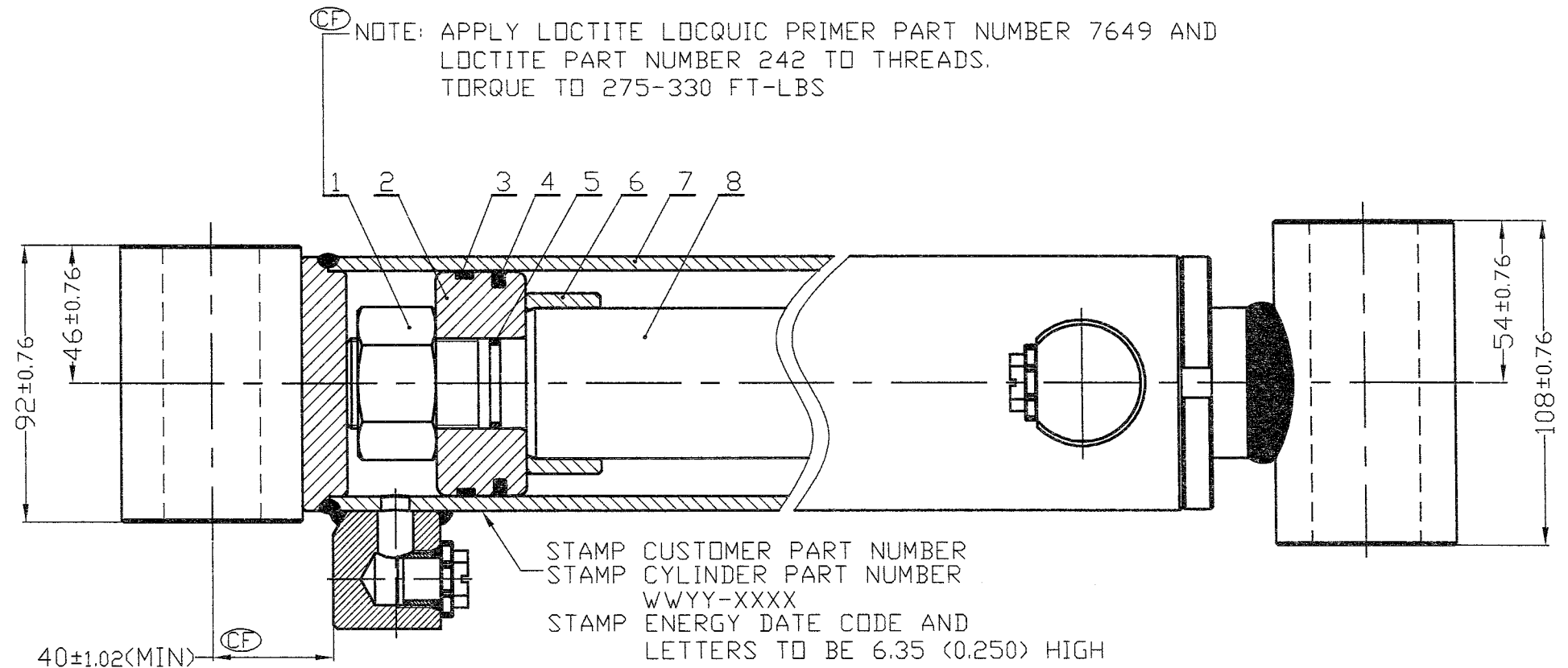


Bill of Material

Item No.	Part No. Drawing No.	Part Name	Usage Qty.	Material
1	110297J	Nut Lock Reg	1	M30 X 2 X 26.4
2	110594J	Piston	1	QT450-12
3	*110511J	Himod Slydning	1	GP6500750-HM061
4	*110512J	Zurcon Wynseal	1	PW4200750-Z20N
5	*110292J	O-Ring	1	ORAR00120-N70
6	110596J	Stop Tube	1	Ø60 X Ø50.24 X 25
7	110600J	Cylinder Body	1	Weldment
8	110598J	Rod W/C	1	Weldment
9	110595J	Guide	1	QT450-12
10	*110455J	O-Ring	1	OR4006700-N70
11	*110456J	Back-up Ring	1	BG3100688-PTFE
12	*110457J	C-Ring	1	65Mn (U21652) Ø3.0
13	*110077J	Zurcon U-cup RU3	1	RU3000500-Z20
14	*110078J	Scraper DA17	1	WD1700500-N9
15	110458J	Spanner Nut	1	M70 X 2 X 10
16	110493J	Port Plug	2	PP--3/4-16UNF
17	*110494J	Port O-Ring	2	SAE #8

* SEAL KIT:
110592J(PARTS MARKED WITH AN ASTERISK)



CYLINDER RATING

CYLINDER PRESSURE RATING ----- 3,118 PSI
 OPERATING TEMPERATURE RANGE -40 F TO 200 F
 MINIMUM STRUCTURAL SAFETY FACTOR ----- 2:1
 MINIMUM WALL BURST PRESSURE ----- 10,800 PSI
 MAXIMUM RECOMMENDED ROD SPEED 100 FT/MIN
 MINIMUM RECOMMENDED ROD SPEED 5 FT/MIN
 *** ROD SPEEDS UNDER 5 FT/MIN MAY CAUSE SEAL NOISE DUE TO STICK/SLIP.

BORE	Ø75mm	STOP TUBE	25mm
ROD DIA	Ø50mm	FINISH	55/65 BLACK
STROKE	784mm	ROD FINISH	HARD CHROME

CF=CRITICAL FEATURE

Material:	Third Angle Projection.	No.	Revision	Date	Appr. By
		01	ISSUE DRAWING	04/07/2007	XL-X ENG
Title:		Q38152 D			
Title:		CYLINDER CYR-75mm,ROD-50mm,STROKE-784mm			
Scale:		1:1			
Drawn by:	Checked by:	Approved By:		01	
XL-X	XP-W	04/12/2007			